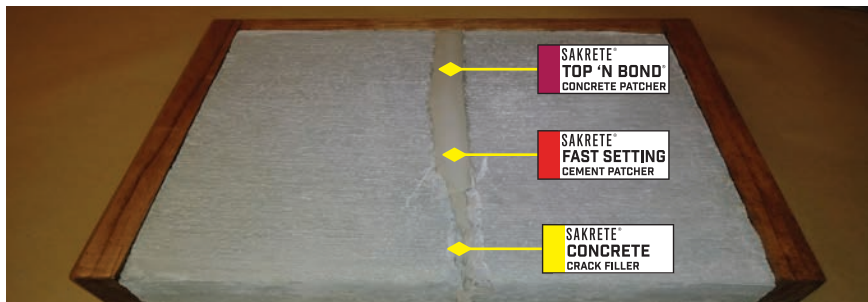


SAKRETE® PRO TIPS: CRACK REPAIR

All cracks are not created equal.

But with the right products and these pro tips, you can solve them all with Sakrete.



PREPARATION

- Apply when dry conditions and temperatures over 50°F are forecasted for at least 24 hours.
- Clean and remove all loose concrete or other contaminants.
- Fill deep cracks with backer rod or sand prior to repairing with Crack Filler.
- Remember that moving cracks will continue to expand unless underlying conditions are corrected.



FOR CRACKS 1/2" WIDE AND 1/4" DEEP OR LESS:

Shake **CRACK FILLER** bottle and cut tip to desired width. Squeeze product into crack. One bottle will repair up to 35 linear feet.

Allow to dry overnight before applying additional layers. Product can be sealed and stored for several months for future jobs.

DO NOT apply any Portland cement-based products over Crack Filler.

REPAIR



FOR NARROW CRACKS FROM 1/4" TO 2" DEEP – VERTICAL OR HORIZONTAL:

Wet surface and prime with **BONDER & FORTIFIER** or **FAST-SETTING CEMENT PATCHER** mixed to a soupy consistency. Allow to dry.

Mix only an amount that can be applied in 5 minutes to a workable consistency and apply to crack. Level with a trowel. Open to foot traffic in 4 hours and vehicles in 24 hours.



FOR WIDE CRACKS FROM 1/2" TO 2" DEEP:

Mix **TOP N BOND** to a workable consistency and apply to crack. Level with a trowel. Open to foot traffic in 24 hours and vehicles in 72 hours.

For applications thicker than 1/2", apply in layers, allowing material to harden between applications.